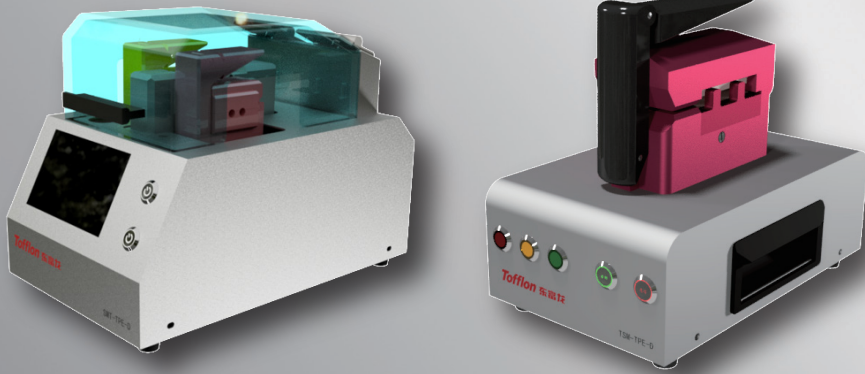
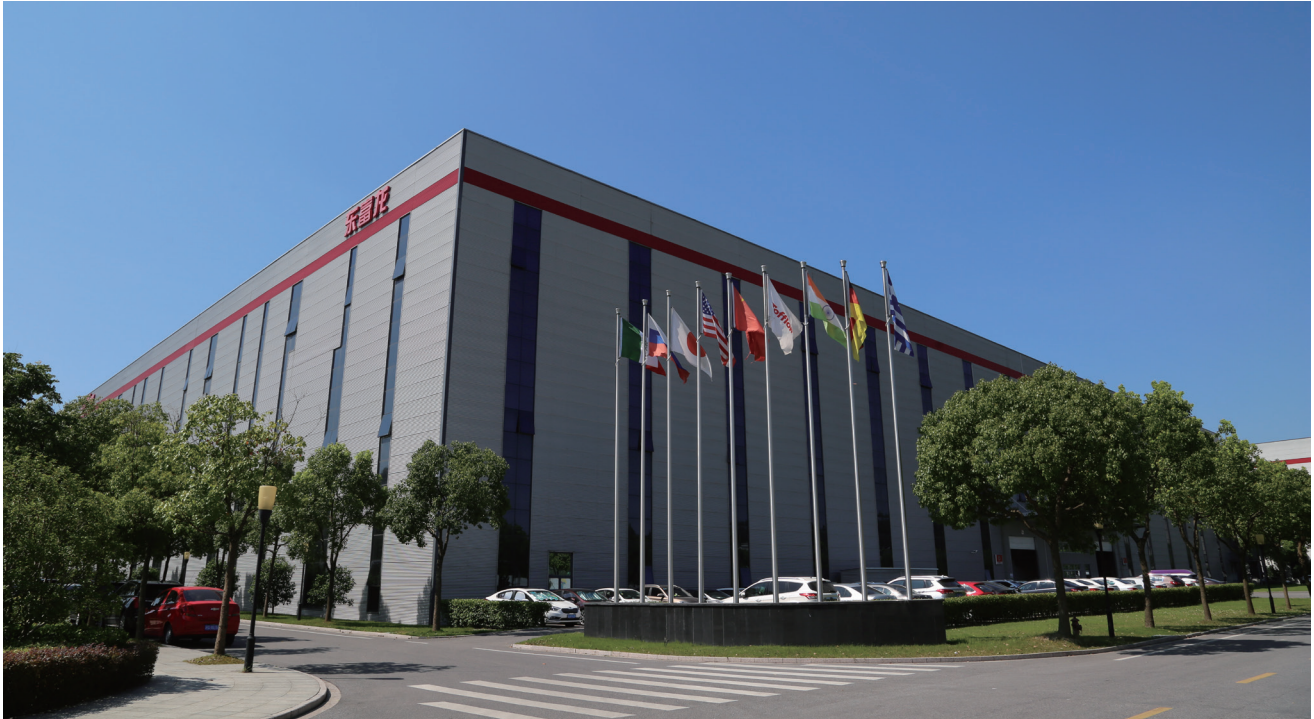


**Tofflon**



**Sterile Connecting  
Machine  
Sterile Tube Sealing  
Machine**

# Tofflon Life Science Co.,Ltd.

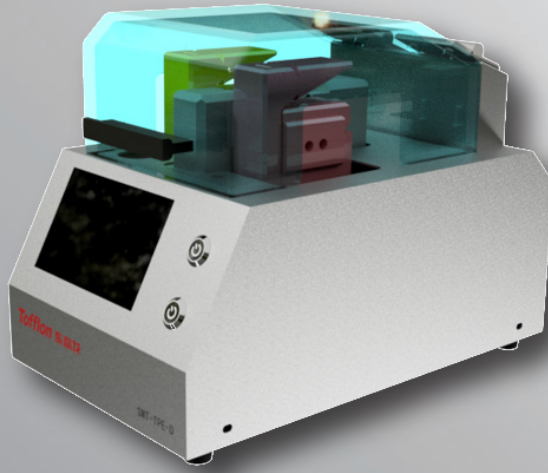


**F**ounded in 1993, Tofflon Science and Technology Group Co., Ltd. (SZ:300171) is a pioneering Chinese enterprise in the field of biotechnology, with a rich history of 30 years. With annual sales reaching 5.4 billion RMB in 2022 and a global workforce of 5,500 employees, Tofflon has established over 50 offices worldwide, embodying a globalized business and team.

Tofflon Life Sciences Co., Ltd., the flagship subsidiary within the group, plays a pivotal role in their portfolio. It focuses on the research and development of cutting-edge technologies in the biopharmaceutical and life science industries. As a strategic division Tofflon life science provides one-stop solutions and services that integrate bioprocessing equipment, core consumables like sterile bags, culture media, resins to further enquire and professionally.

- In the realm of cell therapy, we offer complete solutions for the preparation and production of immune cell pipelines, stem cell pipelines, tumor cell vaccines, and more.
- For gene therapy, we provide overall solutions for the research, development, and industrialization of nucleic acid drugs (mRNA/DNA) and viral vector drugs.
- In the field of biological sample banking, we conduct research and development of automatic sample storage management systems to provide comprehensive solutions for cell seed and tissue samples.
- In the consumables sector, we have developed a complete range of products including disposable bags (culture bags, mixing bags, storage bags), bio-reagents (culture media, cryoprotectants, Ficoll, growth factors), resin (GFC, AC, AEX, CEX, HIC, MMC), filtration (microfiltration, deep filtration, TFF, cassette), and hard packaging materials.
- We also focus on disinfection, offering comprehensive solutions for clean room disinfection, surface and external disinfection, infection control, terminal disinfection, and multi-drug resistant microorganism disinfection, ensuring effective environmental disinfection.

Leveraging Tofflon Group's extensive expertise in design, manufacturing, engineering construction, and after-sales service worldwide, Tofflon Life Sciences Division is committed to serving the biopharmaceutical industry with enhanced speed and professionalism.



## Sterile Connecting Machine

Tofflon sterile connecting machine is an ideal solution with user-friendly for TPE pipe welding, widely used for upstream and downstream pipeline connection of bio-pharmaceutical. It can be used to create closed pipeline connection system in any combination of wet and dry TPE pipes, ensuring quality, reliability and flexibility for pipe welding in clean and unclean areas.

### Parameter

Item	Description
Suitable pipe size	OD(inch) 1/4", 5/16", 3/8", 1/2", 7/16", 5/8", 3/4", 1"
Suitable pipe material	TPE pipe, like Tuflux®TPE, C-Flex®374*, AdvantaFlex®**, PharMed®*BPT, SaniPure®*BDF™ and other verified TPE pipe
Specification	Any combination of wet, dry and liquid contained TPE pipeline in clean and unclean area.
Duration	Within 5 minutes
Connection mode	Sterile connection
Application	TPE pipeline connection of bio-pharmaceutical field and cell therapy field

### Benefits

- ✔ Support sterile connection of any combination of wet and dry TPE pipe with multiple pipe size, rang from 1/4" to 1".
- ✔ The quality and stability of TPE pipe sterile connection can be guaranteed by creating a closed environment in clean or unclean area.
- ✔ The operation is more convenient by automatic control. Color differentiation design of manual components to ensure recognition easily and operation accurately.
- ✔ Easy to move and transfer by the minimalist design and cupped handling design. The top flip-type cover ensure the safety during the operation process.



## Sterile Tube Sealing Machine

Tofflon sterile tube sealing machine is an ideal solution with user-friendly for TPE pipe sealing, widely used for upstream and downstream pipeline connection of bio-pharmaceutical. It can be used to pipeline sterile disconnect in any combination of wet and dry TPE pipes, ensuring quality, reliability and flexibility for pipe disconnection in clean and unclean areas.

### Parameter

Item	Description
Suitable pipe size	OD(inch) 1/4", 5/16", 3/8", 1/2", 7/16", 5/8", 3/4", 1"
Suitable pipe material	TPE pipe, like Tuflux®TPE, C-Flex®374*, AdvantaFlex®**, PharMed®*BPT, SaniPure®*BDF™ and other verified TPE pipe
Specification	Any combination of wet, dry and liquid contained TPE pipeline in clean and unclean area.
Disconnection mode	Hot-melting and cooling-off sealing
Application	TPE pipeline connection of bio-pharmaceutical field and cell therapy field

### Benefits

- ✔ Support sterile disconnection of any combination of wet and dry TPE pipe with multiple pipe size, rang from 1/4" to 1".
- ✔ The quality and stability of TPE pipe sterile connection can be guaranteed by creating a closed environment in clean or unclean area.
- ✔ Compact size and portable, suitable to hang in special position by the bottom hook design.
- ✔ Touch screen combined with key control buttons to strengthen the tactile feedback. And more convenient to use with automatic control.





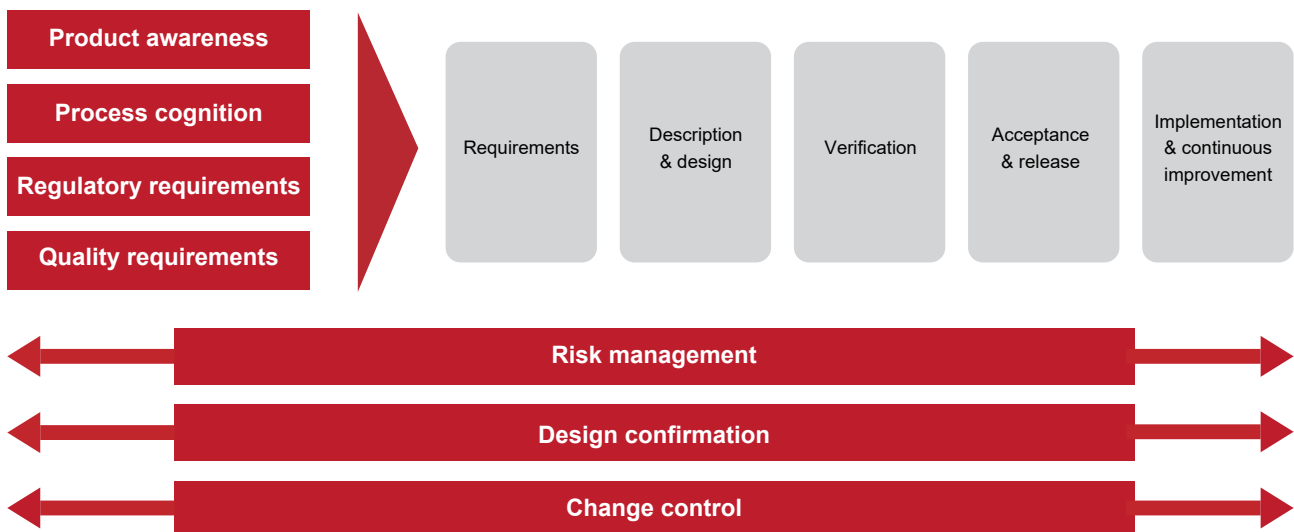
## Project Management

Three main factors determine the success of the project. Our organizational mode has been making constant update and improvement to enable you to fully achieve these goals. Through cooperation with us, you can minimize the direct resources required to manage the selection, purchase, installation, startup and verification of new production equipment.



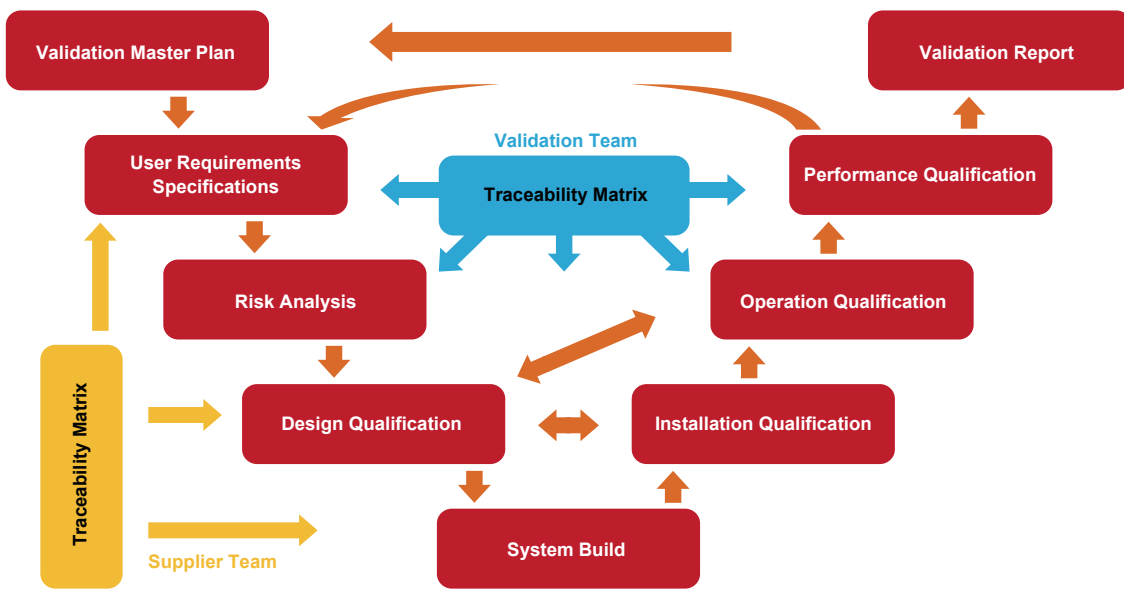
- ✔ Reliable quality
- ✔ Short cycle
- ✔ Focus on cost

## Good Engineering Practice - GEP



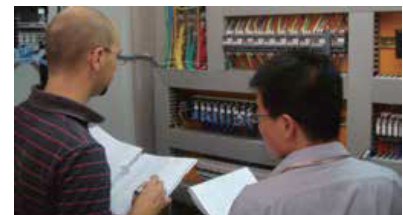


## Validation Support



## Verification Document System

- ✔ Complete document system
- ✔ Strict quality guarantee process
- ✔ Comply with cGMP confirmation scheme
- ✔ Ensure the stability and reliability of product quality







**Tofflon** Tofflon Science and Technology Group Co.,Ltd.

Address: No.1509,Duhui Road,Shanghai,China 201108

Tel: +86 21 6490 1123 / 6490 6201

Fax: +86 21 6490 5148 / 6490 6202

E-mail: [lifescience.info@tofflon.com](mailto:lifescience.info@tofflon.com)

[www.tofflon.com](http://www.tofflon.com)