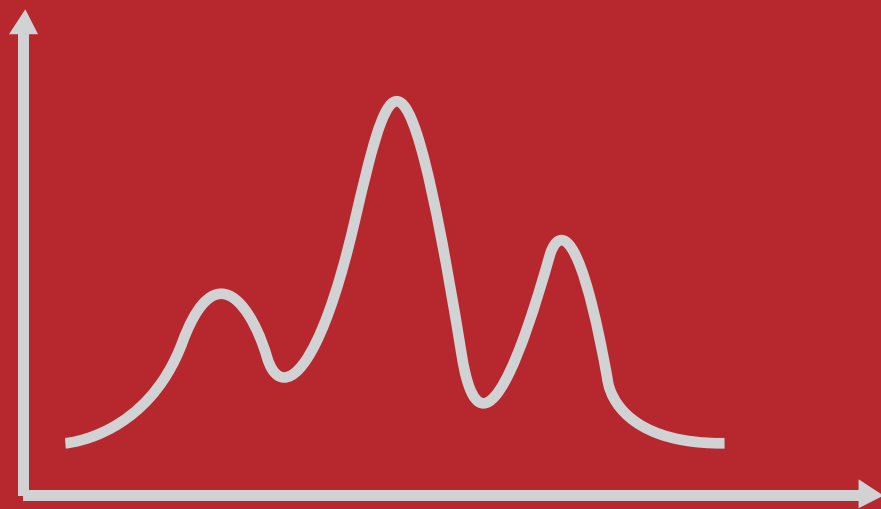


标签蛋白纯化



标签蛋白纯化

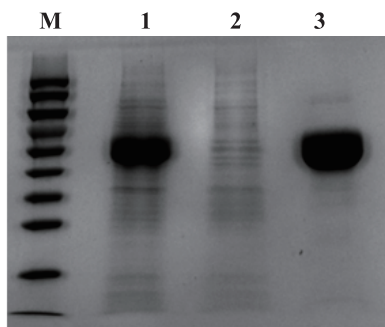
His标签亲和层析纯化介质选择指南



Ni-TED Purose 6 Fast Flow 真核表达 His 标签蛋白纯化首选

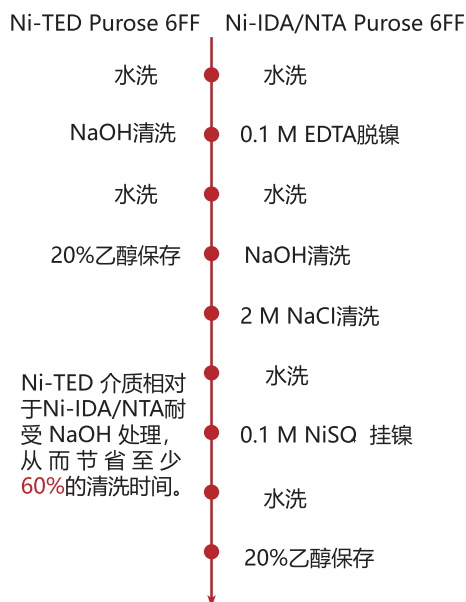
Ni-TED Purose 6 Fast Flow

层析柱: Ni-TED Purose 6 Fast Flow 1mL Column
 样品: His 蛋白标签, 真核表达样品
 平衡缓冲液: 20m M PB, 500 mM NaCl, 20 mM Imidazole, pH 6.8
 洗脱缓冲液: 20m M PB, 500 mM NaCl, 500 mM Imidazole, pH 6.8
 流速: 1mL/min



M: Marker
 1: 样品原液
 2: FT (流穿)
 3: E (洗脱)

His标签蛋白纯化介质的清洗



标签蛋白纯化介质

货号	产品	包装	颗粒大小 (μm)	配基密度 ($/\text{mL}$)	动态结合载量 ($/\text{mL}$)	耐压 (MPa)	最高流速 (cm/h)	pH 稳定性 工作 (清洗)
Ni-IDA Purose Fast Flow		<ul style="list-style-type: none"> · 高动态结合载量 · 快流速 · 再生后, 介质可经百次使用 (样品决定) 						
A40902-14	Ni-IDA Purose 6 FF	10 mL	90	~35 μmol -IDA- Ni^{2+}	50 mg (His) ₆ -protein	0.3	600	4-13 (2-14) (without Ni^{2+})
A40902-05		25 mL						
A40902-06		100 mL						
A40902-07		500 mL						
A40902-08		1 L						
A40902-09		5 L						
Ni-NTA Purose Fast Flow		<ul style="list-style-type: none"> · 基于 Ni-IDA Purose 6 FF 的良好特性, Ni^{2+} 脱落更低。 						
A41002-14	Ni-NTA Purose 6 FF	10 mL	90	~40 μmol -NTA- Ni^{2+}	50 mg (His) ₆ -protein	0.3	600	4-13 (2-14) (without Ni^{2+})
A41002-05		25 mL						
A41002-06		100 mL						
A41002-07		500 mL						
A41002-08		1 L						
A41002-09		5 L						
Ni-TED Purose Fast Flow		<ul style="list-style-type: none"> · 耐受 EDTA 和 DTT, 是真核细胞分泌表达 His 标签蛋白的最佳选择 · 耐受 NaOH 清洗, 无需脱镍, 节省 CIP 时间 · 几乎无 Ni^{2+} 脱落 						
A42302-14	Ni-TED Purose 6 FF	10 mL	90	80-120 μmol -TED- Ni^{2+}	> 15 mg (His) ₆ -protein	0.3	600	4-13 (2-14)
A42302-05		25 mL						
A42302-06		100 mL						
A42302-07		500 mL						
A42302-08		1 L						
A42302-09		5 L						
Ni- Purose High Performance		<ul style="list-style-type: none"> · 高分辨率纯化首选 						
A40904-14	Ni-IDA Purose 6 HP	10 mL	34	~35 μmol -IDA- Ni^{2+}	40 mg (His) ₆ -protein	0.3	150	4-13 (2-14) (without Ni^{2+})
A40904-05		25 mL						
A40904-06		100 mL						
A40904-07		500 mL						
A40904-08		1 L						
A40904-09		5 L						
A41004-14	Ni-NTA Purose 6 HP	10 mL	34	~40 μmol -NTA- Ni^{2+}	50 mg (His) ₆ -protein	0.3	150	4-13 (2-14) (without Ni^{2+})
A41004-05		25 mL						
A41004-06		100 mL						
A41004-07		500 mL						
A41004-08		1 L						
A41004-09		5 L						
A42304-14	Ni-TED Purose 6 HP	10 mL	34	80-120 μmol -TED- Ni^{2+}	> 15 mg (His) ₆ -protein	0.3	150	4-13 (2-14)
A42304-05		25 mL						
A42304-06		100 mL						
A42304-07		500 mL						
A42304-08		1 L						
A42304-09		5 L						
GSH Purose Fast Flow		<ul style="list-style-type: none"> · 对于 GST 标签蛋白和其他能与谷胱甘肽结合蛋白具有高动态结合载量 · 快流速 						
A41301-13	GSH Purose 4 FF	5 mL	90	$\geq 15 \mu\text{mol}$ glutathione	>10 mg GST-protein	0.3	500	4-10 (3-12)
A41301-14		10 mL						
A41301-05		25 mL						
A41301-06		100 mL						
A41301-07		500 mL						
A41301-08		1 L						
A41301-09	5 L							

标签蛋白纯化预装柱

货号	产品	内径 / 床高 (mm)	包装	平均粒径 (μm)	动态结合载量 (/mL)	耐压 (MPa)	最高流速 (mL/min)
ZA40902-01	PrePack Ni-IDA Purose 6 FF	7/25	5×1 mL	90	50 mg (His) ₆ -protein	0.3	4
ZA40902-02		16/25	5×5 mL				20
ZA40902-15		7/25	1×1 mL				4
ZA40902-16		16/25	1×5 mL				20
ZA40902-72		8/10	1×5 mL				1.6
ZA40902-03		16/10	1×20 mL				5
ZA41002-01	PrePack Ni-NTA Purose 6 FF	7/25	5×1 mL	90	50 mg (His) ₆ -protein	0.3	4
ZA41002-02		16/25	5×5 mL				20
ZA41002-15		7/25	1×1 mL				4
ZA41002-16		16/25	1×5 mL				20
ZA41002-72		8/10	1×5 mL				1.6
ZA41002-03		16/10	1×20 mL				5
ZA42302-01	PrePack Ni-TED Purose 6 FF	7/25	5×1 mL	90	> 15 mg (His) ₆ -protein	0.3	4
ZA42302-02		16/25	5×5 mL				20
ZA42302-15		7/25	1×1 mL				4
ZA42302-16		16/25	1×5 mL				20
ZA42302-72		8/10	1×5 mL				1.6
ZA42302-03		16/10	1×20 mL				5
ZA40904-01	PrePack Ni-IDA Purose 6 HP	7/25	5×1 mL	34	40 mg (His) ₆ -protein	0.3	4
ZA40904-02		16/25	5×5 mL				20
ZA40904-15		7/25	1×1 mL				4
ZA40904-16		16/25	1×5 mL				20
ZA40904-72		8/10	1×5 mL				1.6
ZA40904-03		16/10	1×20 mL				5
ZA41004-01	PrePack Ni-NTA Purose 6 HP	7/25	5×1 mL	34	50 mg (His) ₆ -protein	0.3	4
ZA41004-02		16/25	5×5 mL				20
ZA41004-15		7/25	1×1 mL				4
ZA41004-16		16/25	1×5 mL				20
ZA41004-72		8/10	1×5 mL				1.6
ZA41004-03		16/10	1×20 mL				5
ZA42304-01	PrePack Ni-TED Purose 6 HP	7/25	5×1 mL	34	> 15 mg (His) ₆ -protein	0.3	4
ZA42304-02		16/25	5×5 mL				20
ZA42304-15		7/25	1×1 mL				4
ZA42304-16		16/25	1×5 mL				20
ZA42304-72		8/10	1×5 mL				1.6
ZA42304-03		16/10	1×20 mL				5
ZA41301-01	PrePack GSH Purose 4 FF	7/25	5×1 mL	90	>10 mg GST-protein	0.3	4
ZA41301-02		16/25	5×5 mL				20
ZA20304-15		7/25	1×1 mL				4
ZA20304-16		16/25	1×5 mL				20
ZA20304-72		8/10	1×5 mL				1.6
ZA20304-03		16/10	1×20 mL				5